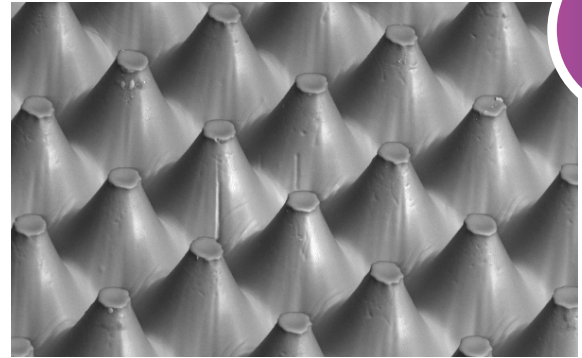




# LUX ITP™ Platform

## Flat-Top Dots In-The-Plate



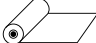



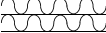
LUX ITP is THE first to market inherently flat-top dot technology. LUX ITP is the culmination of our passion and dedication to elevate flexographic printing to the next level. LUX ITP delivers flat-top dots in the plate and their proven print benefits to package printing industry.

The LUX ITP is a comprehensive portfolio of hard, medium, and super soft durometer plates. These plates are used in numerous package printing applications: flexible packaging; tag & label; folding carton; sacks, paper, multiwall; and corrugated.

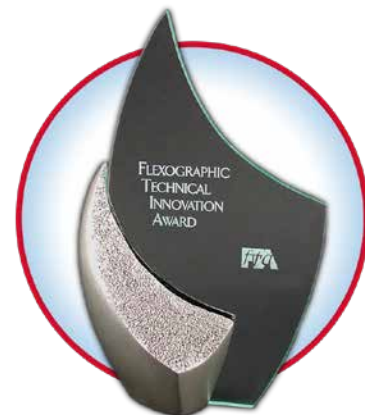
### PROVEN BENEFITS OF LUX ITP

- Flat-top dots directly in the plate
- Increased productivity in platemaking
- Consistent results in both platemaking and print reproduction

### SEGMENTS

- Flexible Packaging 
- Tags and Labels 
- Folding Carton 
- Sacks, Paper, Multiwall 
- Corrugated 

### PRODUCT RANGE



Awarded the 2016 Technical Innovation Award by the FTA

Elevate Your Print to the Next Level



# LUX ITP™ Platform

## Flat-Top Dots In-The-Plate

### LUX ITP™ 60

- 60 durometer plate
- Patented clean plate technology
- Near 1:1 mask-to-plate imaging
- Low dot gain
- Exceptional consistency in printing
- Outstanding durability and drape
- Extremely low tack
- UV LED compatible
- Solvent or thermal processing

### LUX ITP™ EDGE

- Soft durometer plate
- High line screen and imaging capabilities
- Capable of 1% 150 lpi
- Patented clean plate technology
- Near 1:1 mask-to-plate imaging
- Reduced fluting
- Exceptional consistency in printing
- Low Tack

### LUX ITP™ EPIC®

- Unique micro-rough surface
- Patented clean plate technology
- Excellent ink transfer
- A balanced plate surface for low image gain and exceptional solids coverage
- Near 1:1 mask-to-plate imaging
- Low dot gain
- Outstanding durability and drape
- Extremely low tack
- UV LED compatible
- Solvent or thermal processing

### LUX ITP™ M

- Medium durometer plate
- Patented clean plate technology
- Near 1:1 mask-to-plate imaging
- Low dot gain
- Exceptional consistency in printing
- Outstanding durability and drape
- Extremely low tack
- UV LED compatible
- Solvent or thermal processing

### LUX ITP™ MELO

- Super soft durometer
- Minimal board crush
- Lowest possible fluting with a super soft digital plate
- Excellent ink transfer
- Holds the finest detail in all plate thicknesses
- Reduced dot gain
- Faster press speeds
- Quick wash out
- Chip resistant, tack free and extremely durable

### LUX ITP™ Sleeve

- 60 durometer
- Able to be formed into seamless sleeves using existing methods
- Flat-top-dot sleeves with standard ITR exposure equipment
- Near 1:1 mask-to-plate imaging
- Superior imaging/resolution capability
- Low dot gain
- Exceptional consistency in printing
- Outstanding durability and drape
- Extremely low tack



**MacDermid**

GRAPHICS SOLUTIONS

<http://graphics.macdermid.com>

©2019-2020 MacDermid, Inc. All rights reserved.