

# LUX® ITP™ EPIC®

Photopolymer Plates



**EPIC®**  
Photopolymer Printing Plates

150 LINE				
133 LINE				
120 LINE				
	2%	25%	50%	90%

.005 .010 .020 .030

**14 PT. CONTRASTING IMAGE**  
**12 PT. EXCELLENT WEAR RESISTANCE**  
**8 PT. SPECIAL MICRO-MATTE SURFACE**  
**4 PT. REMARKABLE EXPOSURE LATITUDE**

**MacDermid**  
GRAPHICS SOLUTIONS  
[www.macdermid.com/graphics](http://www.macdermid.com/graphics)

## LUX® ITP™ EPIC®: Capped Flat-Top Dots Right Out of the Box

LUX In-the-Plate™ (ITP) EPIC offers a unique micro-rough surface plus our award-winning flat-top dot technology right out of the box. The innovative cap layer delivers excellent ink transfer in challenging flexo print applications and ensures the plate provides the best tonal range possible.

Eliminating the need for surface screening, LUX ITP EPIC streamlines your workflow, reduces RIP time and file size, and improves print consistency.





LUX ITP EPIC offers near 1:1 mask-to-plate imaging capability, thus minimizing the need for a bump curve. By reducing the bump curve, printers are able to expand the available color gamut and print a smaller dot.

LUX ITP EPIC is a durable and extremely low tack plate, which is perfectly suited for long and clean running print jobs. Count on the company that elevates your print to the next level - **MacDermid**

## KEY FEATURES & BENEFITS

- Flat-top dots directly in the plate
- Excellent ink transfer
- Patented clean plate technology
- A balanced plate surface for low image gain and exceptional solids coverage
- Eliminates the need for surface screening
- Low dot gain
- Outstanding durability and drape
- Extremely low tack
- Solvent or thermal processing
- Compatible with UV LED exposure devices

## SEGMENTS

- Flexible Packaging 
- Tags and Labels 
- Folding Carton 
- Sacks, Paper, Multiwall 

# LUX<sup>®</sup> ITP<sup>™</sup> EPIC<sup>®</sup>

## Photopolymer Plates



### TECHNICAL SPECIFICATIONS

LUX ITP EPIC is available in thicknesses of 0.045 in (1.14 mm) to 0.112 in (2.84 mm) and in sizes up to 50 in x 80 in (1,270 mm x 2,032 mm). Please contact your MacDermid representative for details.

### REPRODUCTION CAPABILITIES

Halftones:	1-99% (175 lpi (69 lines/cm))
Fine lines:	0.002 in (0.05 mm) width
Isolated dots:	0.004 in. (0.10 mm) diameter

### PLATE PROCESSING\*

LUX ITP EPIC can be processed in either solvent or LAVA thermal processing systems. For solvent processing, use with SOLVIT<sup>®</sup> M100 or SOLVIT QD is recommended. Most other safe-solvent solutions may be used.

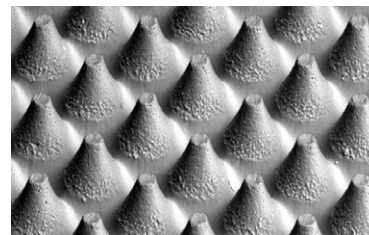
\*Processing times for any particular job and process are determined by equipment and other factors; consult your MacDermid representative for help in optimizing your plate processing.

### INK/SOLVENT COMPATIBILITY

LUX ITP EPIC plates have ink compatibility similar to natural rubber. Plates are compatible with water and alcohol based inks containing up to 20% acetate. LUX ITP EPIC is not recommended for oil-based inks, hydrocarbon solvents, or inks with acetate content higher than 20%.

### APPLICATIONS

LUX ITP EPIC is a digital sheet photopolymer for use in labels, folding carton, multi-wall bag, preprinted liner, flexible packaging and other flexo markets that require a high durometer plate.



### RECOMMENDED PROCESSING CONDITIONS\*

GAUGE (mil/mm)	DUROMETER (Shore A)	DESIRED RELIEF (mil)	BACK EXPOSURE <sup>1</sup> (mJ/cm <sup>2</sup> )	(sec)	FACE EXPOSURE <sup>2</sup> (J/cm <sup>2</sup> )	(min)	WASHOUT <sup>3</sup> (sec)	DRY TIME (min)	POST EXPOSURE <sup>4</sup> (min)	DETACK <sup>5</sup> (min)
45/1.14	73	20	537	37	13.8	10	280	90	5	3
67/1.70	66	24	870	60	13.8	10	320	120	5	3
107/2.72	57	25	1,813	125	13.8	10	320	120	5	3

\*Contact your MacDermid representative for assistance in establishing proper processing conditions

1. Lamp intensity is 14.5 mW/cm<sup>2</sup>
2. Lamp intensity is 14.5 mW/cm<sup>2</sup>
3. SOLVIT M100 washout times
4. Lamp intensity is 17 mW/cm<sup>2</sup>
5. Lamp intensity is 10 mW/cm<sup>2</sup>m



### FOR MORE INFORMATION, PLEASE CONTACT:

<b>USA</b> 5210 Phillip Lee Drive Atlanta, GA 30336 P 404.696.4565	<b>EUROPE</b> 3 rue de l'Industrie - BP 30160 68702 Cernay Cedex, France P +33 (0) 3 89 38 43 12
---	---

[www.macdermid.com/graphics](http://www.macdermid.com/graphics)

©2019 MacDermid, Inc. All rights reserved.

