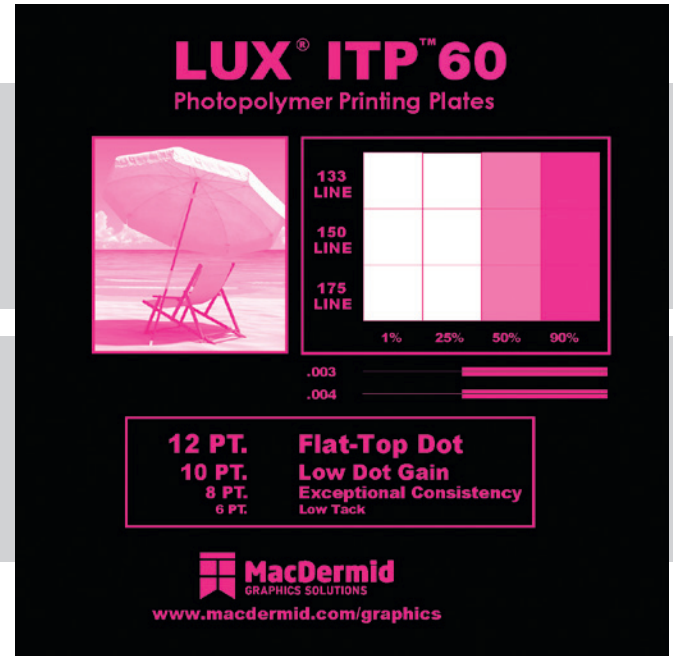


LUX[®] ITP[™] 60

Photopolymer Plates



LUX[®] In-the-Plate[™]:

Flat-Top Dots Right Out of the Box.

LUX[®] In-the-Plate[™] (ITP) provides all the benefits of LUX[®] Lamination and our exclusive flat top dot shape, but with the platemaking convenience of LUX[®] flat-top dots right out of the box. No additional platemaking steps or equipment are needed to take advantage of the print quality and consistency that LUX[®] flat-top dots provide.

The premier LUX[®] ITP[™] plate product is LUX[®] ITP[™] 60. ITP[™] 60 is a 60 durometer plate that offers 1:1 mask-to-plate imaging capability, thus eliminating the need for a bump curve. By removing the bump curve, printers are able to expand the available color gamut and print a smaller dot.





LUX[®] ITP[™] 60 is a durable and extremely low tack plate, which is perfectly suited for long and clean running print jobs. It has been designed to be processed in either solvent or LAVA thermal systems.

When you're looking to take your game to the next level, count on the flat-top dot technology leader, MacDermid.

KEY FEATURES

- Flat-top dots while using standard platemaking techniques
- 1:1 mask-to-plate reproduction depending on line screen
- Low dot gain
- Exceptional consistency in printing
- Outstanding durability and drape
- Extremely low tack
- Solvent or thermal processing

SEGMENTS

- Flexible Packaging 
- Tags and Labels 
- Folding Carton 
- Sacks, Paper, Multiwall 



MacDermid
GRAPHICS SOLUTIONS

LUX[®] ITP[™] 60

Photopolymer Plates



TECHNICAL SPECIFICATIONS

LUX[®] ITP[™] 60 is available in thicknesses of 0.045" (1.14 mm) and 0.067" (1.70 mm) and in sizes up to 52" x 80" (1,320 mm x 2,032 mm). Please contact your MacDermid representative for details.

REPRODUCTION CAPABILITIES

Halftones: 1 - 99% at 175 lpi (59 lines/cm)

Fine lines: 0.002 in. (0.05mm) width

Isolated dots: 0.004 in. (0.10 mm) diameter

PLATE PROCESSING*

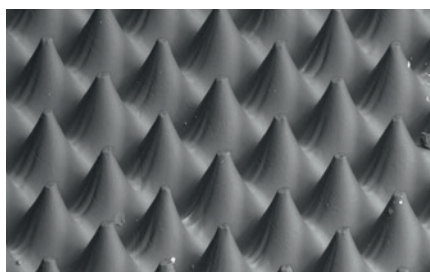
LUX[®] ITP[™] 60 can be processed in either solvent or LAVA thermal processing systems. For solvent processing, use with SOLVIT[®] M100, SOLVIT[®] LO or SOLVIT[®] QD is recommended. Most other safe-solvent solutions may be used. Processing times for any particular job are determined by equipment; consult your MacDermid representative for help in optimizing your plate processing.

INK/SOLVENT COMPATIBILITY

LUX[®] ITP[™] 60 plates have ink compatibility similar to natural rubber. Plates are compatible with water and alcohol based inks containing up to 20% acetate. LUX ITP 60 is not recommended for oil-based inks, hydro-carbon solvents, or inks with acetate content higher than 20%.

APPLICATIONS

LUX[®] ITP[™] 60 is a digital sheet photopolymer for use in labels, folding carton, multi-wall bag, preprinted liner, flexible packaging and other flexo markets that require a high durometer plate.



RECOMMENDED PROCESSING CONDITIONS*

GAUGE	DUROMETER	DESIRED RELIEF	BACK EXPOSURE ^{1,2}		FACE EXPOSURE ²		WASH OUT ³	DRY TIME	POST EXPOSURE ⁴	DETACK ⁵
(mil/mm)	(Shore A)	(mil/mm)	(mJ/cm ²)	(sec)	(J/cm ²)	(min)	(sec)	(min)	(min)	(min)
45/1.14	78	20	400	25	13.8	10	280	90	5	3
67/1.70	71	20	672	42	13.8	10	280	120	5	3

*Contact your MacDermid representative for assistance in establishing proper processing conditions

1. Lamp intensity is 16 mW

2. Lamp intensity is 23 mW

3. SOLVIT[®] M100 washout times 4. Lamp intensity is 17 mW

5. Lamp intensity is 10 mW



©2016 MacDermid, Inc. All rights reserved.

FOR MORE INFORMATION, PLEASE CONTACT:

USA

5210 Phillip Lee Drive

Atlanta, GA 30336

P 404.696.4565

macdermid.com/graphics

EUROPE

3 rue de l'Industrie - BP 30160

68702 Cernay Cedex, France

P +33 (0) 3 89 38 43 12