

# MAX

## Photopolymer Plates



**MAX**  
Photopolymer Printing Plates

150 LINE  
133 LINE  
120 LINE

2% 25% 50% 90%

.003  
.004

14 PT.  
12 PT.  
8 PT.  
6 PT.

**Low Dot Gain**  
**Excellent Drape**  
Quick Imaging Plate  
Extremely Low Tack (Dry) Plate

**MacDermid**  
GRAPHICS SOLUTIONS

### MAXimum Print Quality Spanning a Broad Range of Package Printing.

MacDermid MAX is the newest and best performing hard, analog sheet photopolymer plate from MacDermid. It is designed to deliver the MAXimum print benefit – low dot gain in screen/process color printing with smooth ink lay down for bold solids.





MAX plates work well with a wide variety of substrates and ink. This 60 durometer plate has excellent drape characteristics, making it well suited for applications involving small-diameter cylinders on narrow web presses. MAX is also an extremely low tack plate, which allows long, clean running print performance.

For eye-popping highlights, from the smallest to largest repeat lengths, count on the company that innovates with you in mind. MacDermid.

### KEY FEATURES

- Excellent drape
- Low dot gain
- High resilience for clean running
- Extremely low tack (dry) plate
- Quick imaging

### SEGMENTS

- Flexible Packaging 
- Tags and Labels 
- Folding Carton 
- Sacks, Paper, Multiwall 

# MAX

## Photopolymer Plates



### TECHNICAL SPECIFICATIONS

MAX is available in thicknesses of 0.030" (0.76 mm) - 0.112" (2.84 mm) and in sizes up to 50" x 80" (1,270 mm x 2,032 mm). Please contact your MacDermid representative for details.

### REPRODUCTION CAPABILITIES

**Halftones:** 0.030-0.112" gauge (0.76 mm – 2.84 mm)  
1-95% at 175 lpi (69 lines/cm)

**Fine lines:** 0.002 in. (0.05 mm) width

**Isolated dots:** 0.003 in. (0.08 mm diameter)

### PLATE PROCESSING\*

Use with SOLVIT® M100, SOLVIT® LO or SOLVIT® QD is recommended. Most other safe-solvent solutions may be used.

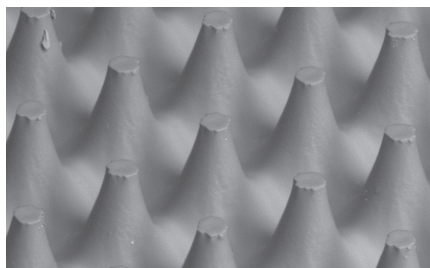
Processing times for any particular job are determined by equipment, copy requirements, and plate thickness.

### INK/SOLVENT COMPATIBILITY

MAX plates have ink compatibility similar to natural rubber. Plates are compatible with water and alcohol based inks containing up to 25% acetate. MAX is not recommended for oil-based inks, hydrocarbon solvents, or inks with acetate ester content higher than 25%.

### APPLICATIONS

MAX is an analog sheet photopolymer for use in labels, folding carton, multi-wall bag, preprinted liner, flexible packaging and other flexo markets that require a hard durometer plate.



### RECOMMENDED PROCESSING CONDITIONS\*

GAUGE	DUROMETER	DESIRED RELIEF	BACK EXPOSURE <sup>1,2</sup>		FACE EXPOSURE <sup>2</sup>		WASH OUT <sup>3</sup>	DRY TIME	POST EXPOSURE <sup>3</sup>	DETACK <sup>4</sup>
(mil/mm)	(Shore A)	(mil/mm)	(mJ/cm <sup>2</sup> )	(sec)	(J/cm <sup>2</sup> )	(min)	(sec)	(min)	(min)	(min)
30/0.76	84	23/0.58	0	0	5.2-7.9	330-490	240	75	5	5
45/1.14	78	23/0.58	560	35	5.2-7.9	330-490	300	90	5	5
67/1.70	71	27/0.68	660	42	5.2-7.9	330-490	360	120	5	5
107/2.71	63	30/0.76	1360	85	5.2-9.8	330-610	450	150	5	5
112/2.84	63	35/0.89	1360	85	5.2-9.8	330-610	450	150	5	5

\*Contact your MacDermid representative for assistance in establishing proper processing conditions

1. Lamp intensity 16mW
2. Solvit QD washout times
3. Lamp intensity 17 mW
4. Lamp intensity 10 mW



©2017 MacDermid, Inc. All rights reserved.

### FOR MORE INFORMATION, PLEASE CONTACT:

#### USA

5210 Phillip Lee Drive  
Atlanta, GA 30336  
P 404.696.4565

#### EUROPE

3 rue de l'Industrie - BP 30160  
68702 Cernay Cedex, France  
P +33 (0) 3 89 38 43 12

[macdermid.com/graphics](http://macdermid.com/graphics)