

LUX[®] ITP[™] Platform

Flat-Top Dots In-The-Plate[™]



LUX[®] Flat-Top Dot Technology Platform

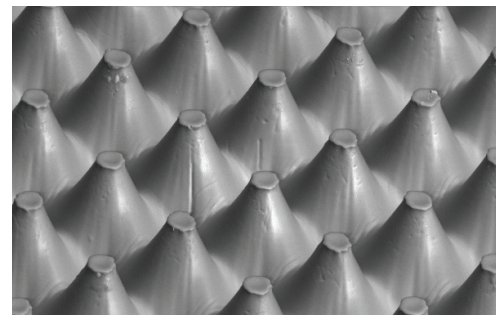
LUX[®] performance and characteristics without adding steps to the workflow.

Achieving flat-top dots without adding steps to the workflow has been a reality since spring of 2014. The first such option available commercially, LUX[®] In-The-Plate[™] (ITP) was created as a new platform of flat-top dot technology - the product of a persistent and focused effort to advance flexographic platemaking and printing. The result was an innovation that made the proven print benefits of flat-top dots easily available to an entire industry.

The LUX[®] ITP[™] product line is now a subset of the LUX[®] flat-top technology platform. MacDermid's innovative platform is based upon developing to our customer's needs, and offers various solutions and choices to this end. The LUX[®] technology platform now has multiple unique selections for producing flat-top dots: lamination, in-the-plate capabilities and even "alternate" methods for producing flat top or hybrid-style dots.



Awarded the 2016 Technical Innovation Award by the FFTA



LUX® ITP™ Platform

Flat-Top Dots In-The-Plate™



LUX® FLAT-TOP DOT TECHNOLOGY PLATFORM

Key Features

LUX® ITP™ 60

- Flat-Top Dots with standard platemaking techniques
- 1:1 mask-to-plate reproduction depending on line screen
- Low dot gain
- Outstanding durability and drape
- Extremely low tack
- Solvent or thermal processing
- 60 durometer plate
- Clean print technology

LUX® ITP™ M

- Flat-Top Dots with standard platemaking techniques
- 1:1 mask-to-plate reproduction depending on line screen
- Clean print technology
- Low dot gain
- Outstanding durability and drape
- Extremely low tack
- Solvent or thermal processing
- Medium durometer plate

LUX® ITP™ EPIC®

- Flat-Top Dots with standard platemaking techniques
- Excellent ink transfer
- 1:1 mask-to-plate reproduction depending on line screen
- Low dot gain
- Outstanding durability and drape
- Extremely low tack
- Solvent or thermal processing
- A balanced plate surface for low image gain and exceptional solids coverage
- Clean print technology

LUX® ITP™ Sleeve

- Able to be formed into seamless sleeves using existing methods
- Flat-top-dot sleeves with standard ITR exposure equipment
- 1:1 mask-to-plate reproduction depending on line screen
- Low dot gain
- Outstanding durability
- Extremely low tack
- 60 durometer

Digital MAF

- Dot profile optimized specifically for post print corrugated
- Reduced dot gain
- Faster press speeds
- Flat-top dots right out of the box
- Solvent processing

MacDermid will continue to support and develop new products and technologies based upon the total LUX® platform and the subsequent pathways to achieving LUX® quality.



FOR MORE INFORMATION, PLEASE CONTACT:

📍 5210 Phillip Lee Drive, Atlanta GA 30336

📞 404.696.4565 🌐 macdermid.com/graphics

©2018 MacDermid, Inc. All rights reserved.