

EPIC®

Photopolymer Plates



EPIC®
Photopolymer Printing Plates

150 LINE
133 LINE
120 LINE

2% 25% 50% 90%

.005 .010 .020 .030

14 PT. CONTRASTING IMAGE
12 PT. EXCELLENT WEAR RESISTANCE
8 PT. SPECIAL MICRO-MATTE SURFACE
4 PT. REMARKABLE EXPOSURE LATITUDE

MacDermid
GRAPHICS SOLUTIONS
www.macdermid.com/graphics

Plates The Industry Standard For Capped Plates.

MacDermid EPIC® photopolymer plates are the plates printers rely on most to meet their high-resolution process color printing demands.





Our EPIC plates offer a proprietary print surface and carefully balanced physical properties to provide excellent graphic reproduction, while offering better wear resistance. MacDermid EPIC plates' unique, micro-rough surface texture provides excellent ink transfer for smooth and bold solids, and because they offer the widest exposure latitude of any photopolymer plates available, you no longer need to guess the proper exposure time for line copy printing, process color or combinations of both.

For bold solids and excellent tonal range, count on the company that innovates with you in mind. MacDermid.

KEY FEATURES

- Exceptional exposure latitude requiring no masking
- Excellent ink transfer ensuring smoother solids with no pinholes
- Improved wear resistance for longer runs
- Clean printing with fewer stops for plate clean up
- Fast and accurate mounting

SEGMENTS

- Flexible Packaging 
- Tags and Labels 
- Folding Carton 
- Sacks, Paper, Multiwall 

EPIC®

Photopolymer Plates



TECHNICAL SPECIFICATIONS

EPIC® is available in thicknesses of 0.030" – 0.112" and in sizes up to 50" x 80". Please contact your MacDermid representative for details.

REPRODUCTION CAPABILITIES

Halftones: 1-98% at 150 lpi (60 lines/cm)
Fine lines: 0.003 in. (0.076 mm) width
Isolated dots: 0.005 in. (0.127 mm) diameter

PLATE PROCESSING*

Use with SOLVIT® M100 or SOLVIT® QD is recommended. Most other safe-solvent solutions may be used.

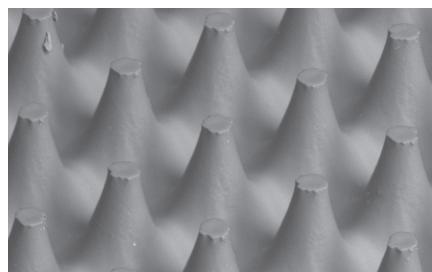
Processing times for any particular job are determined by equipment, copy requirements, and plate thickness.

INK/SOLVENT COMPATIBILITY

EPIC photopolymer is compatible with UV, alcohol, water, and glycol based inks. EPIC is not recommended for use with oil-based inks or hydrocarbon solvents

APPLICATIONS

EPIC is recommended for high quality printing on film and preprint liner, particularly for process color. EPIC can also be used successfully in other applications such as high quality labels and folding cartons.



RECOMMENDED PROCESSING CONDITIONS*

GAUGE	DUROMETER	DESIRED RELIEF	BACK EXPOSURE ^{1,2}		FACE EXPOSURE ²		WASH OUT ³	DRY TIME	POST EXPOSURE ³	DETACK ⁴
(mil/mm)	(Shore A)	(mil/mm)	(mJ/cm ²)	(sec)	(J/cm ²)	(min)	(sec)	(min)	(min)	(min)
0.045/1.14	71	22-25	1350-1500	120-135	5.3-17.2	8-26	240	90	8-10	6-10
0.067/1.70	62	22-25	350-400	30-35	5.3-17.2	8-26	300	90	8-10	6-10
0.107/2.71	53	30-35	1150-1250	110-110	5.3-17.2	8-26	360	120	8-10	6-10

*Contact your MacDermid representative for assistance in establishing proper processing conditions

1. Lamp intensity 16mW
2. Solvit QD washout times
3. Lamp intensity 17 mW
4. Lamp intensity 10 mW



©2017 MacDermid, Inc. All rights reserved.

FOR MORE INFORMATION, PLEASE CONTACT:

USA

5210 Phillip Lee Drive
Atlanta, GA 30336
P 404.696.4565

EUROPE

3 rue de l'Industrie - BP 30160
68702 Cernay Cedex, France
P +33 (0) 3 89 38 43 12

macdermid.com/graphics