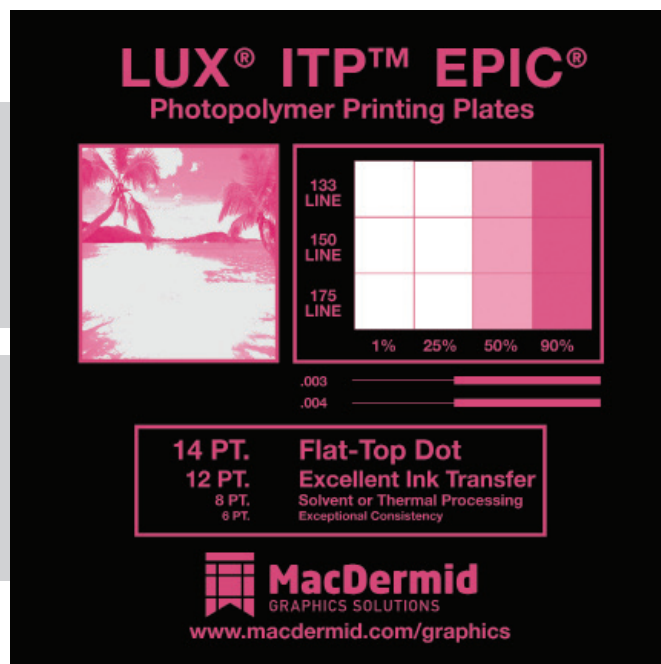


LUX® ITP™ EPIC®

Photopolymer Plates



LUX® ITP™ EPIC®: Capped Flat-Top Dots Right Out of the Box

LUX In-the-Plate™ (ITP) EPIC is the newest addition to the award-winning technology from MacDermid that provides all the benefits of LUX lamination, but with the convenience of flat-top dots right out of the box. No additional platemaking steps or equipment are needed to take advantage of the print quality and consistency that LUX flat-top dots provide.

LUX ITP EPIC offers a unique micro-rough surface for excellent ink transfer for challenging flexo printing applications or unique ink requirements. The innovative cap layer, specifically developed for the ITP chemistry, ensures that the plate provides the best tonal range possible.

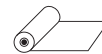



LUX ITP EPIC offers near 1:1 mask-to-plate imaging capability, thus minimizing the need for a bump curve. By reducing the bump curve, printers are able to expand the available color gamut and print a smaller dot.

LUX ITP EPIC is a durable and extremely low tack plate, which is perfectly suited for long and clean running print jobs. It has been designed to be processed in either solvent or LAVA® thermal systems.

KEY FEATURES & BENEFITS

- Flat-top dots directly in the plate
- Excellent ink transfer
- Clean print technology
- Near 1:1 mask-to-plate reproduction
- A balanced plate surface for low image gain and exceptional solids coverage
- Low dot gain
- Outstanding durability and drape
- Extremely low tack
- Solvent or thermal processing
- Fully compatible with UV LED exposure devices

SEGMENTS

- Flexible Packaging 
- Tags and Labels 
- Folding Carton 
- Sacks, Paper, Multiwall 



LUX[®] ITP[™] EPIC[®]

Photopolymer Plates



TECHNICAL SPECIFICATIONS

LUX ITP EPIC is available in thicknesses of 0.045 in (1 mm), 0.067 in (2 mm), and 0.107 in (3 mm) and in sizes up to 50 in x 80 in (1,320 mm x 2,032 mm). Please contact your MacDermid representative for details.

REPRODUCTION CAPABILITIES

Halftones: 1-99% (175 lpi (69 lines/cm))

Fine lines: 0.002 in (0.05 mm) width

Isolated dots: 0.004 in. (0.10 mm) diameter

PLATE PROCESSING*

LUX ITP EPIC can be processed in either solvent or LAVA thermal processing systems. For solvent processing, use with SOLVIT[®] M100 or SOLVIT QD is recommended. Most other safe-solvent solutions may be used.

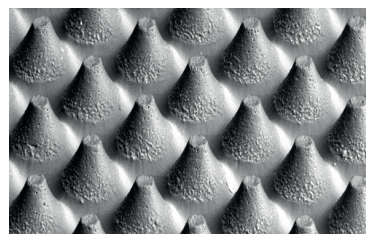
*Processing times for any particular job and process are determined by equipment and other factors; consult your MacDermid representative for help in optimizing your plate processing.

INK/SOLVENT COMPATIBILITY

LUX ITP EPIC plates have ink compatibility similar to natural rubber. Plates are compatible with water and alcohol based inks containing up to 20% acetate. LUX ITP EPIC is not recommended for oil-based inks, hydrocarbon solvents, or inks with acetate content higher than 20%.

APPLICATIONS

LUX ITP EPIC is a digital sheet photopolymer for use in labels, folding carton, multi-wall bag, preprinted liner, flexible packaging and other flexo markets that require a high durometer plate.



RECOMMENDED PROCESSING CONDITIONS*

GAUGE (mil/mm)	DUROMETER (Shore A)	DESIRED RELIEF (mil)	BACK EXPOSURE ¹		FACE EXPOSURE ²		WASHOUT ³	DRY TIME	POST EXPOSURE ⁴	DETACK ⁵
			(mJ/cm ²)	(sec)	(J/cm ²)	(sec)	(sec)	(min)	(min)	(min)
45/1.14	73	20	537	37	13.8	10	280	90	5	3
67/1.70	66	24	870	60	13.8	10	320	120	5	3
107/2.72	57	25	1,813	125	13.8	10	320	120	5	3

*Contact your MacDermid representative for assistance in establishing proper processing conditions

1. Lamp intensity is 14.5 mW/cm²
2. Lamp intensity is 14.5 mW/cm²
3. SOLVIT M100 washout times
4. Lamp intensity is 17 mW/cm²
5. Lamp intensity is 10 mW/cm²



FOR MORE INFORMATION, PLEASE CONTACT:

USA	EUROPE
5210 Phillip Lee Drive	3 rue de l'Industrie - BP 30160
Atlanta, GA 30336	68702 Cernay Cedex, France
P 404.696.4565	P +33 (0) 3 89 38 43 12

www.macdermid.com/graphics

©2018 MacDermid, Inc. All rights reserved.



A Platform Specialty Products Company