

# MGC

## Photopolymer Plates



**MGC**  
Photopolymer Printing Plates

100 LINE  
85 LINE  
50 LINE

5% 10% 70%

.030  
.020  
.010

.030  
.020  
.010

**MacDermid**  
GRAPHICS SOLUTIONS

### The Right Printing Plate For All Corrugated Board Print Applications.

MacDermid MGC is the next generation sheet photopolymer specifically designed to address all direct print corrugated board requirements.

MGC sheet photopolymer ensures high quality direct printing for the most demanding corrugated print surfaces. The soft plate durometer, 32 Shore A, provides excellent solids coverage, while its low tack and high resilience offer long and clean press runs. MGC has the added capability to image fine detail without the need to back mask, providing superior print quality and cycle time savings for the plate maker.

For exceptional, direct printing on corrugated board, count on the company that innovates with you in mind. MacDermid.

#### KEY FEATURES

- Quick wash out
- Holds the finest detail without the need to back mask
- Image fidelity for high-end graphic and halftone reproduction at all gauges
- No cupping allows for uniform impression at all process speeds
- Chip resistant, tack free and extremely durable

#### SEGMENTS

- Corrugated

# MGC

## Photopolymer Plates



### TECHNICAL SPECIFICATIONS

MGC is available in thicknesses of 0.112" (2.84 mm) – 0.250" (6.35 mm) and in sizes up to 52" x 80" (1,320 mm x 2,032 mm). Please contact your MacDermid representative for details.

### REPRODUCTION CAPABILITIES

**Halftones:** 0.112-0.250 gauge (2.84 mm - 6.36 mm)  
2 - 90% at 100 lpi (40 lines/cm)

**Fine lines:** 0.005 in. (0.13mm) width

**Isolated dots:** 0.015 in. (0.38mm) diameter

*Fine lines and isolated dots using 0.250 (6.35 mm) plate*

### PLATE PROCESSING\*

Use with SOLVIT® M100 or SOLVIT® QD is recommended. Most other safe-solvent solutions may be used.

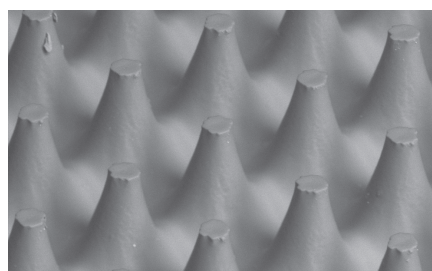
Processing times for any particular job are determined by equipment, copy requirements, and plate thickness.

### INK/SOLVENT COMPATIBILITY

MGC plates have ink compatibility similar to natural rubber. Plates are compatible with water and alcohol-based inks containing up to 25% acetate. MGC is not recommended for oil-based inks, hydrocarbon solvents, or inks with acetate ester content higher than 25%.

### APPLICATIONS

MGC is a sheet photopolymer for use in corrugated post print markets and other flexo markets that require a soft durometer plate.



### RECOMMENDED PROCESSING CONDITIONS\*

GAUGE	DUROMETER	DESIRED RELIEF	BACK EXPOSURE <sup>1,2</sup>		FACE EXPOSURE <sup>2</sup>		WASH OUT <sup>3</sup>	DRY TIME	POST EXPOSURE <sup>3</sup>	DETACK <sup>4</sup>
(mil/mm)	(Shore A)	(mil/mm)	(mJ/cm <sup>2</sup> )	(sec)	(J/cm <sup>2</sup> )	(min)	(sec)	(hrs)	(min)	(min)
112/2.84	38	55/1.40	750	45	4,000-6,000	250-375	400	1.5-2	8	10
125/3.18	36	60/1.52	900	55	4,000-6,000	250-376	400	1.5-2	8	10
155/3.94	34	70/1.78	900	55	4,000-6,000	250-377	450	2-2.5	8	10
250/6.35	32	125/3.18	2300	45	8,000-10,000	500-625	650	2-2.5	8	10

\*Contact your MacDermid representative for assistance in establishing proper processing conditions

1. Lamp intensity 16mW
2. Solvit QD washout times
3. Lamp intensity 17 mW
4. Lamp intensity 10 mW



©2017 MacDermid, Inc. All rights reserved.

### FOR MORE INFORMATION, PLEASE CONTACT:

#### USA

5210 Phillip Lee Drive  
Atlanta, GA 30336  
P 404.696.4565

#### EUROPE

3 rue de l'Industrie - BP 30160  
68702 Cernay Cedex, France  
P +33 (0) 3 89 38 43 12

[macdermid.com/graphics](http://macdermid.com/graphics)