

LUX[®] ITP[™] MELO

Photopolymer Plates



Crushing the Competition, Not Your Corrugated Board

LUX[®] ITP[™] MELO from MacDermid is a super soft, out of the box flat-top dot solution for corrugated - making it ideal for printing on low to medium quality board. LUX ITP MELO's minimal board crush is critical to maintaining box stability and protecting the integrity of the product in a corrugated box. In addition to its softness, LUX ITP MELO utilizes an optimized dot profile that dramatically reduces fluting without the use of additional platemaking techniques or exposure systems.

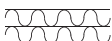
LUX ITP MELO delivers outstanding packaging graphics for the corrugated printing sector with maximum shelf impact and minimum board crush.

For the most challenging problems in corrugated printing, partner with the plate manufacturer that innovates with you in mind - MacDermid.

KEY FEATURES & BENEFITS

- Super soft durometer
- Engineered flat-top dot directly in the plate
- Lowest possible fluting with a super soft digital plate
- Minimal board crush
- Excellent ink transfer
- No extra steps necessary
- Reduced dot gain
- Faster press speeds
- Quick wash out
- Holds the finest detail in all plate thicknesses
- Chip resistant, tack free and extremely durable

SEGMENTS

- Corrugated 



LUX[®] ITP[™] MELO

Photopolymer Plates



TECHNICAL SPECIFICATIONS

LUX ITP MELO is available in thicknesses of 0.112 in - 0.250 in (3 mm - 6 mm) in sizes up to 50 in x 80 in. Please contact your MacDermid representative for details.

REPRODUCTION CAPABILITIES

	112-155 mil (3-4 mm)	170-250 mil (4-6 mm)
Halftones:	2-95% (120 lpi / 47 l/cm)	2-95% (100 lpi / 40 l/cm)
Fine lines:	0.003 in/0.08 mm	0.005 in/0.13 mm
Isolated dots:	0.008 in/0.20 mm diameter	0.016 in/0.41 mm diameter

PLATE PROCESSING*

It is recommended that LUX ITP MELO be processed with SOLVIT[®] M100, SOLVIT LO or SOLVIT QD. Most other safe-solvent solutions may be used.

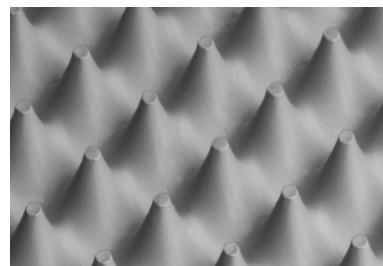
*Processing times for any particular job and process are determined by equipment and other factors; consult your MacDermid representative for help in optimizing your plate processing.

INK/SOLVENT COMPATIBILITY

LUX ITP MELO plates have ink compatibility similar to natural rubber. Plates are compatible with water and alcohol based inks containing up to 20% acetate. LUX ITP MELO is not recommended for oil-based inks, hydrocarbon solvents, or inks with acetate content higher than 20%.

APPLICATIONS

LUX ITP MELO is a sheet photopolymer with a dot profile optimized for post print corrugated and other flexo markets that require a soft durometer plate.



LUX ITP MELO 85 lpi @ 4% 100x

RECOMMENDED PROCESSING CONDITIONS*

GAUGE (mil/mm)	DUROMETER (Shore A)	DESIRED RELIEF (mil/mm)	BACK EXPOSURE ¹ (mJ/cm ²)	(sec)	FACE EXPOSURE ¹ (mJ/cm ²)	(sec)	WASHOUT ² (sec)	DRY TIME (hrs)	POST EXPOSURE ³ (min)	DETACK ⁴ (min)
112/2.84	32	45/1.14	950	95	5,000-7,000	500-700	400	1.5-2	3	3
125/3.18	31	50/1.27	1050	105	5,000-7,000	500-700	400	1.5-2	3	3
155/3.94	29	60/1.52	1250	125	5,000-7,000	500-700	450	2-2.5	3	3
250/6.35	25	120/2.54	2400	240	8,000-10,000	800-1,000	650	2-2.5	3	3

*Contact your MacDermid representative for assistance in establishing proper processing conditions

1. Lamp intensity 10.0 mW/cm² (UVA 340 - 380 nm)

2. Solvit M100 Washout Times

3. Lamp intensity 6.0 mW/cm² (UVA 340 - 380 nm)

4. Lamp intensity 10.0 mW/cm² (UVC 220 - 300 nm)



MacDermid
GRAPHICS SOLUTIONS

FOR MORE INFORMATION, PLEASE CONTACT:

USA

5210 Phillip Lee Drive
Atlanta, GA 30336

P 404.696.4565

www.macdermid.com/graphics

EUROPE

3 rue de l'Industrie - BP 30160
68702 Cernay Cedex, France

P +33 (0) 3 89 38 43 12



©2018 MacDermid, Inc. All rights reserved.

A Platform Specialty Products Company