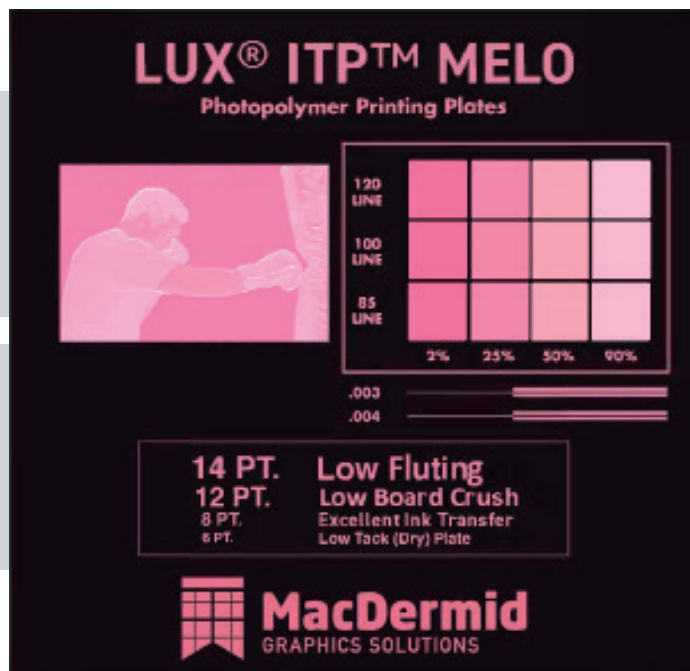


LUX® ITP™ MELO

Photopolymer Plates



Crushing the Competition, Not Your Corrugated Board

LUX® ITP™ MELO from MacDermid is a super soft, out of the box flat-top dot solution for corrugated - making it ideal for printing on low to medium quality board. In addition to its softness, LUX® ITP™ MELO utilizes an optimized dot profile that dramatically reduces fluting without the use of additional platemaking techniques or exposure systems.

Simply put, LUX® ITP™ MELO delivers outstanding packaging graphics for the corrugated printing sector with maximum shelf impact and ensuring minimum board crush.

For the most challenging problems in corrugated printing, partner with the plate manufacturer that innovates with you in mind. Count on MacDermid.

KEY FEATURES

- Super Soft Durometer
- Engineered Flat-Top Dot Directly In The Plate

KEY BENEFITS

- Lowest possible fluting with a supersoft digital plate
- Minimal Board Crush
- Excellent Ink Transfer
- No extra steps necessary
- Reduced dot gain
- Faster press speeds
- Quick wash out
- Holds the finest detail in all plate thicknesses
- Chip resistant, tack free and extremely durable

SEGMENTS

- Corrugated 



LUX® ITP™ MELO

Photopolymer Plates



TECHNICAL SPECIFICATIONS

LUX® ITP™ MELO is available in thicknesses of 0.112" (2.84mm) - 0.250" (6.35mm) in sizes up to 50" x 80".

Please contact your MacDermid representative for details.

REPRODUCTION CAPABILITIES

	107-155 mil (2.72-3.94mm)	170-250 mil (4.32-6.35mm)
Halftones:	2-95% (120 lpi / 47 l/cm)	2-95% (100 lpi / 40 l/cm)
Fine lines:	0.003"/0.08mm	0.005"/0.13mm
Isolated dots:	0.008"/0.20mm	0.016"/0.41mm diameter

PLATE PROCESSING*

It is recommended that LUX® ITP™ MELO be processed with SOLVIT® M100, SOLVIT® LO or SOLVIT® QD. Most other safe-solvent solutions may be used.

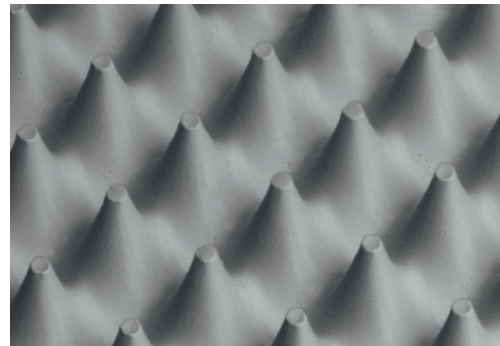
Processing times for any particular job and process are determined by equipment and other factors; consult your MacDermid representative for help in optimizing your plate processing.

INK/SOLVENT COMPATIBILITY

LUX® ITP™ MELO plates have ink compatibility similar to natural rubber. Plates are compatible with water and alcohol based inks containing up to 20% acetate. LUX® ITP™ MELO is not recommended for oil-based inks, hydrocarbon solvents, or inks with acetate content higher than 20%.

APPLICATIONS

LUX® ITP™ MELO is a sheet photopolymer with a dot profile optimized for post print corrugated and other flexo markets that require a soft durometer plate.



LUX® ITP™ MELO 85lpi @ 4% 100x

RECOMMENDED PROCESSING CONDITIONS*

GAUGE (mil/mm)	DUROMETER (Shore A)	DESIRED RELIEF (mil/mm)	BACK EXPOSURE ¹ (mJ/cm ²)	(sec)	FACE EXPOSURE ¹ (mJ/cm ²)	(min)	WASHOUT ² (sec)	DRY TIME (hrs)	POST EXPOSURE ³ (min)	DETACK ⁴ (min)
112/2.84	32	45/1.14	950	95	5,000-7,000	300-450	400	1.5-2	3	3
125/3.18	31	50/1.27	1050	105	5,000-7,000	300-450	400	1.5-2	3	3
155/3.94	29	60/1.52	1250	125	5,000-7,000	300-450	450	2-2.5	3	3
250/6.35	25	120/2.54	2400	240	8,000-10,000	500-625	650	2-2.5	3	3

*Contact your MacDermid representative for assistance in establishing proper processing conditions

- Lamp intensity 10.0 mW/cm² (UVA 340 - 380 nm)
- Solvit® M100 Washout Times
- Lamp intensity 6.0 mW/cm² (UVA 340 - 380 nm)
- Lamp intensity 10.0 mW/cm² (UVC 220 - 300 nm)



FOR MORE INFORMATION, PLEASE CONTACT:

USA
 5210 Phillip Lee Drive
 Atlanta, GA 30336
 +1 404.696.4565

EUROPE
 3 rue de l'Industrie - BP 30160
 68702 Cernay Cedex, France
 +33 (0) 3 89 38 43 12

➔ www.macdermid.com/graphics